

Subject - Mathematics

Class - 7th

Answer Key

1. Mean =  $\frac{\text{Sum of observation}}{\text{No. of observations}} = A$

$$2, 4, 6, 8, 10, \dots, N$$

$$\text{Mean} = \frac{2(\text{sum of observation})}{\text{No. of observation}} = 2A$$

→ 2A Ans. (b. option is answer)

2.  $-12 < -4$

(b) option is answer

3. If we multiply any digit by 2 we get even number.

So,

$$(-1) \times (-1) \times (-1) \dots 2m$$

is equal to 1

(a) option is the correct answer

$$4. \quad \frac{16}{x} = 16$$

$$\Rightarrow 16 = 16 \times x$$

$$\Rightarrow x = \frac{16}{16}$$

$$\Rightarrow x = 1$$

So,

(a) option is the answer.

5. Let,

2 is the number.

$$\frac{x}{x} = 1$$

Additive inverse of 1 = -1

$$\text{Multi Result} = 1 \times -1 = -1$$

So, option

(b) is the correct answer.

6. When 5604 is divided by 8, it will give the quotient 700.5

So,

(d) option is the answer.

7.  $P \div \frac{35}{2} = P$

When 0 is divided by any number it will give 0.

So,

(c) option is the answer.

8.  $\frac{2}{3}$  of  $\frac{5}{6}$

9.  $\frac{2}{3} \times \frac{5}{6}$

10.  $\frac{5}{9}$

11. So,

(a) option is the answer.

9.  $1 \text{ km} = 1000 \text{ m}$   
 $\rightarrow 1 \text{ m} = 100 \text{ cm}$   
 $\rightarrow 1 \text{ km} = 1000 \times 100 \text{ cm}$   
 $\rightarrow 1 \text{ km} = 100000 \text{ cm}$

$\rightarrow 1 \text{ cm} = \frac{1}{100000} \text{ km}$

$\rightarrow 5 \text{ cm} = \frac{5}{100000} \text{ km}$

$\rightarrow 0.0005$

So,

(b) is the correct answer.

10. The place value of 2.38 is 2.00

So,

(b) option is the answer

18.  $\frac{1}{8}$  of 2

$\rightarrow \frac{1}{8} \times 2$

$\rightarrow \frac{1}{4}$

11. first 10 whole number

$0 - 9$

$(9)^2 = 81$

(D) option is correct

So,

(c) option is the answer

$$13. \left[ \frac{9}{4} \times \frac{3}{5} \div \frac{12}{5} + \frac{7}{8} \div \frac{5}{4} + \frac{3}{5} \right]$$

$$\rightarrow \left[ \frac{9}{4} \times \frac{3}{5} \times \frac{5}{12} \right] + \left[ \frac{7}{8} \times \frac{4}{5} \right] + \left[ \frac{3}{5} \right]$$

$$\rightarrow \left[ \frac{9}{16} \right] + \left[ \frac{7}{10} \right] + \frac{3}{5}$$

$$\rightarrow \frac{45 + 56 + 48}{80} = \frac{149}{80} = 1 \frac{69}{80}$$

So,

(a) is the answer

$$14. \quad 3x + 4 = 16$$

$$3x = 12$$

$$x = \frac{12}{3}$$

$$x = 4$$

So,

(d) is the answer

$$15. \quad 15(x-9) - 2(x-12) + 5(x+6) = 0$$

$$\rightarrow 15x - 135 - 2x + 24 + 5x + 30 = 0$$

$$\rightarrow 18x - 81 = 0$$

$$\rightarrow 18x = 81$$

$$\rightarrow x = \frac{81}{18} = \frac{9}{2}$$

So,

(c) is option is the answer

16. The value of variable that we get on solving an equation is root of the equation. So, (b) is the correct answer.

17. The statement of the  $7x + 8 = 53$  is seven times of  $x$  plus 8 gives 53.

So,

(a) option is the answer.

$$18. \quad \frac{x+b}{a-b} = \frac{x-b}{a+b} \quad (\text{by cross multiplication})$$

$$\rightarrow (x+b)(a+b) = (a-b)(x-b)$$

$$\rightarrow ax + bx + ab + b^2 = ax - ab - bx + b^2$$



$$2) \quad 2ab - 2bx = 0$$

$$3) \quad 2b[a-x] = 0$$

$$3) \quad a-x = 0$$

$$3) \quad x = -a$$

So,

(c) option is the answer

19. Total number of events = 6

Total number of even number events = 3

$$\frac{3}{6} \text{ Probability} = \frac{\text{event of even number}}{\text{Total number of event}}$$

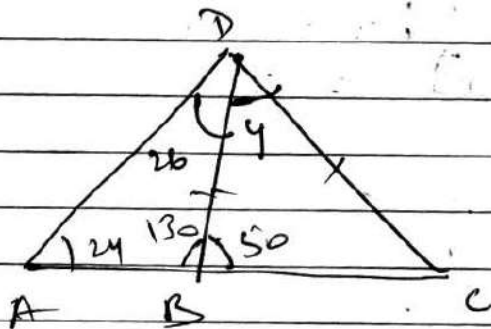
3

$$\frac{3}{6} = \frac{1}{2}$$

So,

(d) option is the answer

20.



$$\angle ABD = 180 - (24 + 24)$$

$$= 180 - 48$$

$$= 130$$

$$\angle DBC = 180 - 130$$

$$= 50 = \angle BCD$$

$$\angle DBC = \angle BCD = 50^\circ$$

$$\text{In } \triangle BDC, y + 50 + 50 = 180$$

$$y + 100 = 180$$

$$y = 180 - 100$$

$$\boxed{y = 80}$$

So (b) option is correct



21. Two acute angles can be complementary to each other.

So,

(a) option is the answer

22.  $90^\circ + x = 90^\circ$

$\therefore x = 0^\circ$

So,

(b) option is the answer

23. Two vertically opposite angles may be unequal.

So,

(d) option is the answer.

24.  $y + y + 50^\circ = 180^\circ$

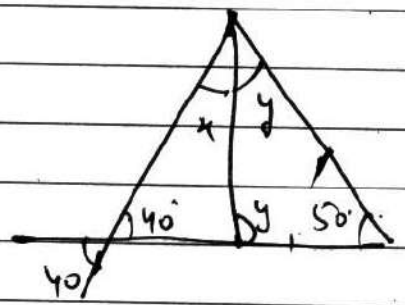
$2y + 50^\circ = 180^\circ$

$2y = 180^\circ - 50^\circ$

$2y = 130^\circ$

$y = \frac{130^\circ}{2} = 65^\circ$

$y = 65^\circ$



$$\Rightarrow 40^\circ + 50^\circ + x + 65^\circ = 180^\circ$$

$$\Rightarrow 90^\circ + 65^\circ + x = 180^\circ$$

$$\Rightarrow 155^\circ + x = 180^\circ$$

$$\Rightarrow x = 180^\circ - 155^\circ$$

$$\Rightarrow x = 25^\circ$$

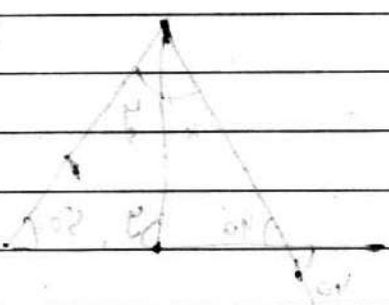
So,

(a) option is the answer.

$$\begin{aligned} 25. \text{ Reflex of } \angle AOB &= 360^\circ - 80^\circ \\ &= 280^\circ \end{aligned}$$

So,

(c) option is the answer.



# Answer key with solution

Subject - Science  
Class - 7th  
Answer Key

26. (d) option is correct answer.  
Related Chapter - 01  
Topic - Functions of parts of plants.
27. (c) option is correct answer.  
Related Chapter - 01  
Topic - Body Composition of living things.
28. (c) option is correct answer.  
Related Chapter - 01  
Topic - Photosynthesis in plants.
29. (d) option is correct answer.  
Related Chapter - 02  
Topic - Digestion processes.
30. (c) option is correct answer.  
Related Chapter - 01  
Topic - Nutrition processes in ~~art~~ plant organisms.
31. (d) option is correct answer.  
Related to Chapter - 01  
Topic - Insectivorous plants.

32. (c)

Related to Chapter - 01

Topic : Nitrogen fixation.

33. (d)

Related to Chapter - 02

Topic : Digestion in Herbivores.

34. (a)

Related to Chapter - 02

Topic : Digestion in Humans.

35. (c)

Related to Chapter - 02

Topic : Digestion in Humans.

36. (b)

Related to Chapter - 02

Topic : Digestion in animals.

37. (d)

Related to Chapter - 02

Topic : Digestion.

38. (a)

Related to Chapter - 02

Topic : Teeth.

39. (d)

Related to Chapter - 02

Topic : Steps of nutrition.

40. (a) e

Related to Chapter - 02

Topic : Teeth.

41. (b) option is correct answer.

Related to Chapter - 02

Topic : Digestion.

42. (a)

Related to Chapter - 03

Topic : Heat transfer processes.

43. (b)

Related to Chapter - 03

Topic : Temperature scale.

44. (b)

Related to Chapter - 03

Topic : Heat transfer processes.

45. (b) of it

Related to Chapter - 03

Topic : Temperature scales.

46. (a) option is correct answer.

Related to Chapter - 03

Topic: - Temperature

47. (b) option is correct answer.

Related to Chapter - 04

Topic: - Acid, Base

48. (c) option is correct answer.

Related to Chapter - 04

Topic: - Acid, Base

49

(c) option is correct answer.

Related to Chapter - 04

Topic: - Strength and acid, base.

50

(a) option is correct answer.

Related to Chapter - 05

Topic: - Chemical and Physical change.



Subject - English

Class - 7th

Answer Key

71. (B) Went ('yesterday' adverb of simple past tense)
72. (C) shall have built (By + time (By the end of March) adverb of future perfect tense)
73. (D) hasn't paid ('yet' adverb of present perfect tense in negative meaning)
74. (C) the ('most important' adjective of superlative degree)
75. (B) an (due to vowel sound)
76. (A) a (due to consonant sound)
77. (D) will (showing 'threat' with first person subject)
78. (B) could (showing 'ability of past' or it is used in simple past tense)
79. (C) should (with 'lest')
80. (D) maize (due to sound of 'ए' while others have 'आ')
81. (D) put (due to sound of 'उ' while others have 'आ')
82. (B) thank (due to sound of 'ऐ' while others have 'आ')
83. (D) Oxygen (options A, B, C are related to 'a car')
84. (D) house (options A, B, C are related to 'a computer')
85. (B) ei (receive)
86. (C) ou (without)
87. (C) ai (faithfully)
88. (B) kingdom (correct form of word 'King')
89. (C) hungry (correct form of word 'hunger')
90. (C) comma (,) (options A, B, D are matched 'spelling with mark but (C) option is not matched.)

CLASS-7.

91. B 2, 3, 5, 7,  $\boxed{11}$  - क्रमागत अभाज्य संख्याएँ हैं।

92. D 0, 2, 5, 10, 17,  $\boxed{28}$  अभाज्य संख्याएँ अलग  
 $\underbrace{\quad\quad\quad}_{+2}$   $\underbrace{\quad\quad\quad}_{+3}$   $\underbrace{\quad\quad\quad}_{+5}$   $\underbrace{\quad\quad\quad}_{+7}$   $\underbrace{\quad\quad\quad}_{+11}$

93. D CAT, FDW, IGZ,  $\boxed{LJC}$   
 $\underbrace{\quad\quad\quad}_{+3}$   $\underbrace{\quad\quad\quad}_{+3}$   $\underbrace{\quad\quad\quad}_{+3}$

94. B Quest, Quiet, Quit, Quite

95. D BODMAS से हल करने पर

96. D घांफते में कुल विद्यार्थियों की संख्या नही दी गई है

97. D 20 मी उत्तर की ओर चले के बाद  $90^\circ$  बायें या दायें मुड़ने पर क्रमशः पश्चिम या पूर्व की ओर चलेगा।

98. C दर्पण में HI MOTU V WAY X नही बदलते हैं

99. B.  $\overline{\quad\quad\quad}^{T=30}$  इसी ओर ले घात =  $30 - 15 + 1$   
 $\underbrace{\quad\quad\quad}_{A(15)}$  = 16 गि  
 $\underbrace{\quad\quad\quad}_{(16)}$

100. D.